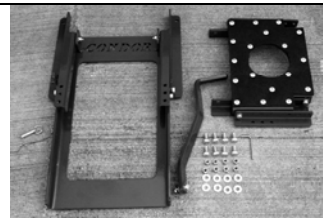
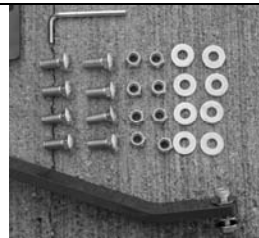


Assembly Instructions



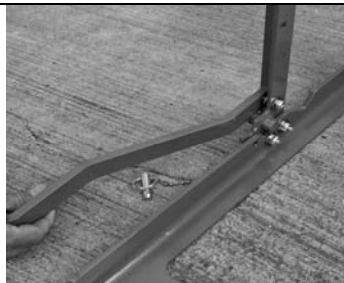
1. Be sure you have all parts according to parts list.



2. You should have the following hardware.



3. Raise hinge member with adhered in-place washer to attach Foot Lever Arm.



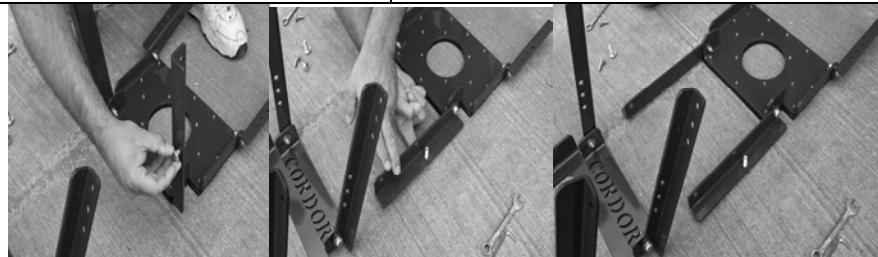
4. Remove High torque nut, lock washer and spacer washer from Foot Lever Arm hardware.



4. Place the Foot Lever Arm into position by inserting the shoulder bolt into the angle arm hole. Be sure to have the hardware stack-up in the order shown above. You should have 1 large yellow washer on each side of the lever and the spacer, lock washer and locking nut (in that order) on the opposite side of the Angle Arm. **Note: be sure that the spacer washer remains centered around the protruding shoulder of bolt when tightening.**



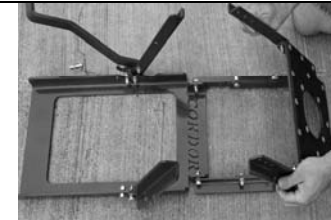
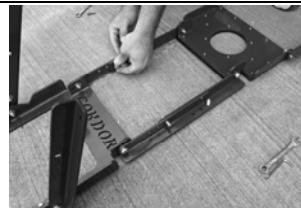
5. Tighten nut using the Alan wrench and a 1/2" wrench. Be sure not to over tighten so as to achieve minimal pivoting resistance and still maintain stability for the Foot Lever Arm actuation. **NOTE: If over tightening occurs, slightly loosen nut until resistance level is achieved. Note: This is a self locking nut and will require a greater amount of force to tighten than a regular nut.**



6. Place the Top Plate upside down in front of the Base Plate with the narrow ends facing each other. Insert Carriage Bolts into the front facing square holes of the Top Plate Angle Arms then lower to the ground.

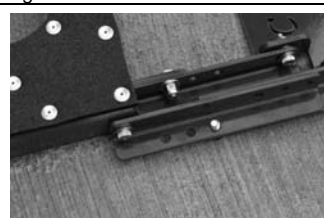
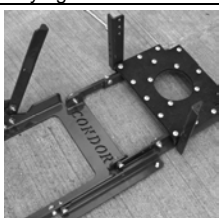
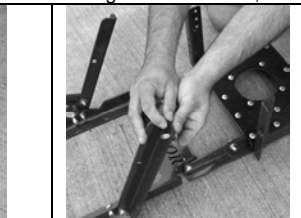


7. Lower the Base Plate Angle Arms onto the Top Plate Angle Arms, making sure to align the holes at the desired height setting.



9. Rotate the Top Plate over 180 Deg.

8. Once the Base Plate Angle Arms are lowered into place, insert Carriage bolts to the sides as shown. Next, place 1 Washer onto each bolt and apply Nylock Nut to each. Using a 9/16" wrench, securely tighten all 4 nuts. You are now ready to attach the rear Angle Arms.



10. Raise both Angle Arms to be directed upwards.

11. Insert Carriage bolts to front side of the Base Plate Angle Arms and lower both to the ground, similar to previous steps. Lower the Top Plate angle Arms down onto Base Plate Angle Arms making sure to align holes. Apply washers and Nylock Nuts to the 2 protruding Carriage bolt and tighten 80% so as to keep the members together for the next step.



12. While holding the Base Plate in place using one hand, raise the Top Plate about 30 Deg. This will allow you to insert the side Carriage Bolts. Once you have inserted the side Bolts, place remaining washers and Nylock Nuts on Bolts and tighten all 4 nuts securely.



13. While holding the Base Plate in place, rotate the Foot Lever Arm Back and raise the unit.